

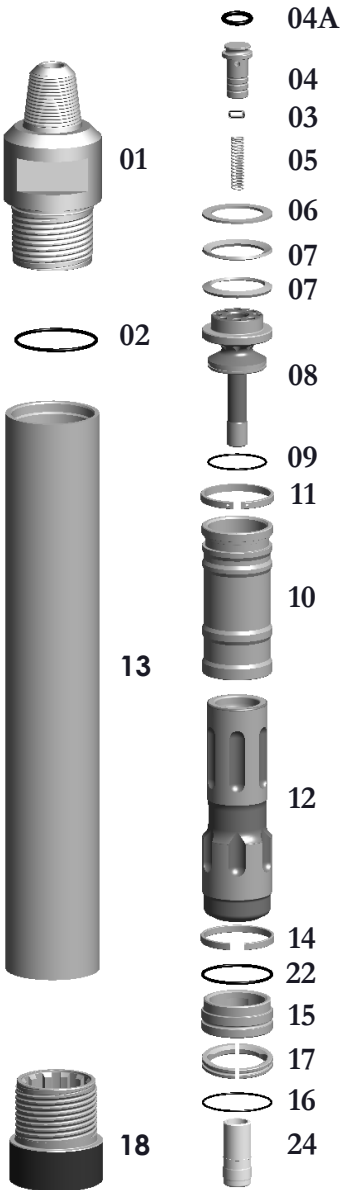
BB6-STD Hammer w/3-1/2" API Reg Pin **Wt. 189 lbs.**

BB6-HD Hammer w/3-1/2" API Reg Pin **Wt. 214 lbs.**

TAKES QL6 SHANKS

**SPECIAL BACKHEAD FEATURES—CALL OFFICE

Thread Change/Pin
Box Thread
Carbide Buttons
Special Flats



Replacement Parts

Hmr Part #	Description	Order #	Weight (lbs.)
BB6-01	Backhead 3-1/2" API REG PIN	EBB6-01	45.0
BB6-01HD	Backhead HD 3-1/2" API REG PIN	EBB6-01HD	47.0
BB6-02	**Replacement O-Ring for Backhead**	E6-16	0.1
BB6-03(S)	Choke Set	EBB6-03S	0.3
BB6-03	Choke Blank	EBB6-03	0.1
BB6-03A	1/8" Choke	EBB6-03A	0.1
BB6-03B	3/16" Choke	EBB6-03B	0.1
BB6-04	Check Valve Dart w/O-Ring	EBB6-04	1.1
BB6-04A	**Replacement O-Ring for Check Valve Dart**	EBB6-04A	0.1
BB6-05	Check Valve Dart Spring	EP6-05	0.4
BB6-06	Spacer	EBB6-06	0.2
BB6-07	Disc Spring (Requires 2)	EBB6-07	0.3/ea
BB6-08	Air Distributor w/O-Ring	EBB6-08	9.0
BB6-09	**Replacement O-Ring for Air Distributor**	EBB6-09	0.1
BB6-10	Cylinder w/Retainer Ring	EBB6-10	8.0
BB6-11	**Replacement Retainer Ring for Cylinder**	EBB6-11	0.5
BB6-12	Piston	EBB6-12	44.0
BB6-13	Wear Sleeve w/Retainer Ring	EBB6-13	65.0
BB6-13HD	Wear Sleeve w/Retainer Ring HD	EBB6-13HD	88.0
BB6-14	**Replacement Retainer Ring for Wear Sleeve**	EBB6-14	0.2
BB6-15	Bearing w/O-Ring	EBB6-15	2.0
BB6-22	**Replacement O-Ring for Bearing**	E6-14	0.2
BB6-17	Bit Retainer Ring w/O-Ring	EBB6-17	0.5
BB6-16	**Replacement O-Ring for Bit Retainer Ring**	EBB6-09	0.1
BB6-18	Chuck	EBB6-18	12.0
BB6-18-DM	Chuck - Ductile	EBB6-18-STD-DM	12.0
BB6-18HD	Chuck HEAVY DUTY	EBB6-18HD	14.0
BB6-18HD-DM	Chuck - Ductile - HEAVY DUTY	EBB6-18HD-DM	14.0
BB6-20	Wear Washer (If Needed)	EBB6-20	0.2
BB6-21	Break Out Ring (Optional)	EBB6-21	0.5
BB6-24	Foot Valve	EQL6-24	0.5

	Outside Diameter		Hammer Length Pin		Hammer Length Box		Bit Size Range		
	IN.	MM.	IN.	MM.	IN.	MM.	IN.	MM.	
BB6	5-1/2	139.7	40-3/4	1035	44-3/8	1124	6-10	153-254	
BB6 HD	5-3/4	146.0	40-3/4	1035	44-3/8	1124	6-1/2-10	165-254	
Choke Size	200 PSI	13.8 BARS	250 PSI	17.2 BARS	300 PSI	20.7 BARS	350 PSI	24.1 BARS	
Blank	Blank	542	15.35	760	21.52	840	23.78	950	26.90
1/8	3.18	569	16.11	800	22.65	888	25.14	1000	28.31
3/16	4.76	597	16.90	848	24.01	946	26.78	1072	30.35

The above air charts are based upon ideal conditions, your results may vary.