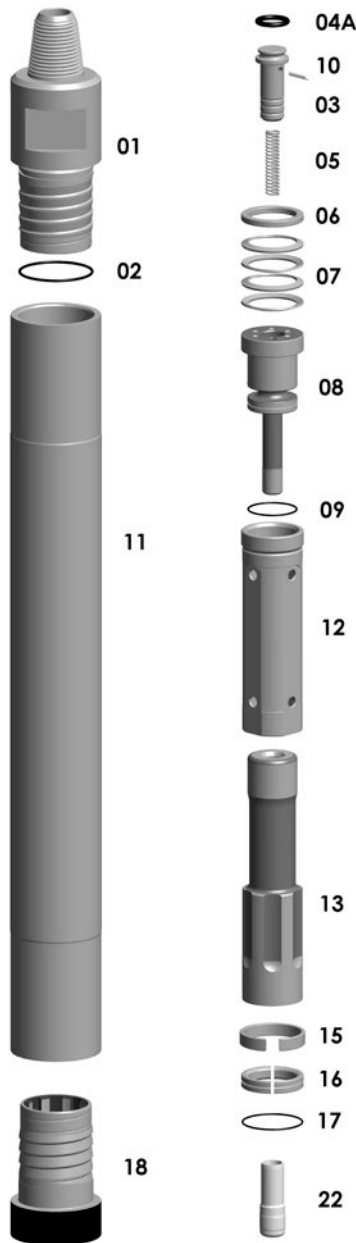


**E50R-STD-HMR-BK**

**TAKES 350R SHANKS**

\*\*SPECIAL BACKHEAD FEATURES – CALL OFFICE



**Replacement Parts**

Hmr Part #	Description	Order #	Weight (lbs.)
50R-01	Backhead 3-1/2" API REG PIN w/O-Ring	<b>E50R-01</b>	45.0
50R-02	**Replacement O-Ring for Backhead**	<b>EBB6-09</b>	0.1
50R-03	Check Valve Dart	<b>ECF6-07</b>	0.4
50R-04A	**Replacement O-Ring for Check Valve**	<b>EBB6-04A</b>	0.1
50R-05	Check Valve Spring	<b>ECF6-06</b>	0.4
50R-06	Washer	<b>E50R-06</b>	0.3
50R-07	Disc Spring (need 4pcs)	<b>E50R-07</b>	0.1/ea.
50R-08	Air Distributor w/O-Ring	<b>E50R-08</b>	9.0
50R-09	**Replacement O-Ring for Air Distributor**	<b>ET4-15</b>	0.1
50R-10(S)	Plug (3 pcs) Set	<b>EBB6-03S</b>	0.3
50R-10	Blank Plug	<b>EBB6-03</b>	0.1
50R-10	1/8" Plug	<b>EBB6-03A</b>	0.1
50R-10	3/16" Plug	<b>EBB6-03B</b>	0.1
50R-11	Wear Sleeve w/Piston Retainer Ring	<b>E50R-11</b>	64.0
50R-15	**Replacement Piston Retainer Ring for Wear Sleeve**	<b>E50R-15</b>	0.5
50R-11	Cylinder	<b>E50R-12</b>	9.0
50R-13	Piston	<b>E50R-13</b>	32.0
50R-16	Bit Retainer Ring w/O-Ring	<b>E50R-16</b>	1.2
50R-17	**Replacement O-Ring for Bit Retainer**	<b>EBB5-16</b>	0.1
50R-18	Chuck	<b>E50R-18</b>	11.0
50R-20	Wear Washer	<b>E50R-20</b>	0.1
50R-22FV	Foot Valve	<b>E50R-22</b>	0.2
50R-24	Brass Break-Out Ring	<b>EBB5-21</b>	0.5

Price is subject to change without notice.

		Outside Diameter		Hammer Length Pin		Hammer Length Box		Bit Size Range	
		IN.	MM.	IN.	MM.	IN.	MM.	IN.	MM.
50R		4-9/16	116	46-3/4	1187.4	49-7/8	1267	5-1/8 – 5-3/4	130 – 146
Choke Size		200	13.8	250	17.2	300	20.7	350	24.1
IN.	MM.	PSI	BARS	PSI	BARS	PSI	BARS	PSI	BARS
BLANK	BLANK	375	10.62	475	13.45	600	16.99	710	20.11
1/4	3.18	460	13.02	570	16.14	710	20.11	830	23.51

The above air charts are based upon ideal conditions, your results may vary.