



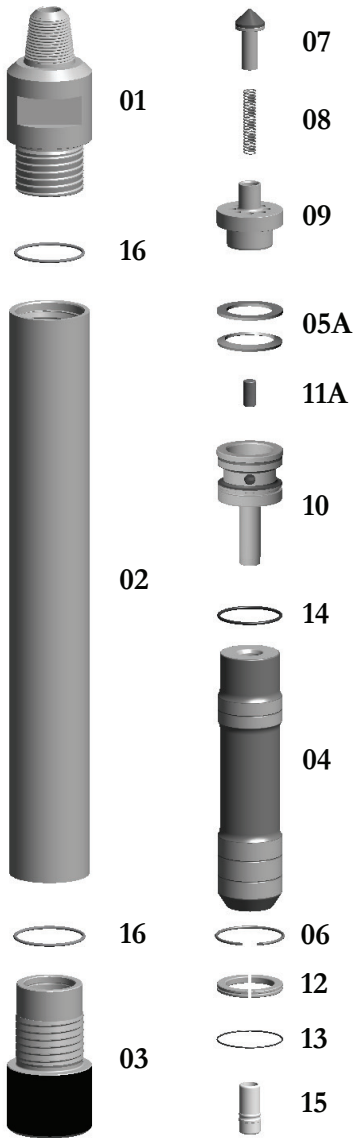
**Drill 6SE: E6SE-STD-Hammer-TS** w/3-1/2" API Reg Pin Wt. 235 lbs.

**Drill 6SE: E6SE-HD-Hammer-TS** w/3-1/2" API Reg Pin Wt. 275 lbs.

**TAKES SD6 SHANKS**

Thread Change/Pin  
Box Thread  
Carbide Buttons  
Special Flats

\*\*SPECIAL BACKHEAD FEATURES—CALL OFFICE



**Replacement Parts**

Hmr Part #	Description	Order #	Weight (lbs.)
6SE-01	Top Sub 3-1/2" API REG PIN w/ O-Ring	<b>E6-01</b>	45.0
6SE-01HD	Top Sub w/O-Ring HEAVY DUTY	<b>E6-01HD</b>	48.0
6SE-16	**Replacement O-Ring for Top Sub**	<b>E6-16</b>	0.1
6SE-02	Piston Case w/Retainer Ring	<b>E6-02</b>	95.0
6SE-02HD	Piston Case w/Retainer Ring HEAVY DUTY	<b>E6-02HD</b>	114.0
6SE-06	**Replacement Retainer Ring for Piston Case**	<b>E6-06</b>	0.2
6SE-03	Driver Sub w/O-Ring	<b>E6-03</b>	24.0
6SE-03HD	Driver Sub HEAVY DUTY w/O-Ring	<b>E6-03HD</b>	26.0
6SE-16	**Replacement O-Ring for Driver Sub**	<b>E6-16</b>	0.1
6SE-04	Piston	<b>E6SE-04</b>	52.0
6SE-05A	Disc Spring & Spacer Set	<b>E6-05A</b>	1.0
6SE-07	Check Valve Dart	<b>E6-07</b>	1.5
6SE-08	Check Valve Dart Spring	<b>E6-08</b>	0.3
6SE-09	Check Valve Guide	<b>E6-09</b>	5.0
6SE-10	Rigid Valve with O-Ring	<b>E6SE-10</b>	11.0
6SE-14	**Replacement O-Ring for Rigid Valve	<b>E6-14</b>	0.2
6SE-11	Choke Set	<b>E6-11(5)</b>	1.5
6SE-11A	Blank Choke	<b>E6-11A</b>	0.3
6SE-11B	1/8" Choke	<b>E6-11B</b>	0.3
6SE-11C	3/16" Choke	<b>E6-11C</b>	0.3
6SE-11D	1/4" Choke	<b>E6-11D</b>	0.3
6SE-11E	5/16" Choke	<b>E6-11E</b>	0.3
6SE-12	Bit Retainer Ring w/ O-Ring	<b>E6-12</b>	1.6
6SE-13	**Replacement O-Ring for Bit Retainer**	<b>E6-13</b>	0.1
6SE-15	Foot Valve	<b>E6-15</b>	0.8
6SE-17	Brass Break-Out Ring (Optional)	<b>E6-17</b>	0.1

	Outside Diameter		Hammer Length Pin		Hammer Length Box		Bit Size Range				
	IN.	MM.	IN.	MM.	IN.	MM.	IN.	MM.			
Drill 6SE	5-7/16	141.1	49-9/32	1251.7	53-1/32	1347	6-10	153-254			
Drill 6SE HD	5-3/4	146.0	49-9/32	1251.7	53-1/32	1347	6-1/2-10	165-254			
Choke Size	150 PSI	10.3 BARS	200 PSI	13.8 BARS	250 PSI	17.2 BARS	300 PSI	20.7 BARS	350 PSI	24.1 BARS	
IN.	MM.										
Blank	Blank	275	7.79	385	10.90	500	14.16	615	17.42	830	23.51
1/8	3.18	300	8.50	415	11.75	540	15.29	665	18.83	890	25.20
3/16	4.76	330	9.34	450	12.74	590	16.71	720	20.39	955	27.05
1/4	6.35	355	10.05	480	13.59	645	18.27	790	22.37	1040	29.45
5/16	7.94	425	12.04	575	16.28	735	20.81	890	25.20	1150	32.57
3/8-None	9.53	475	13.45	650	18.41	825	23.36	995	28.18	1260	35.68

The above air charts are based upon ideal conditions, your results may vary.