

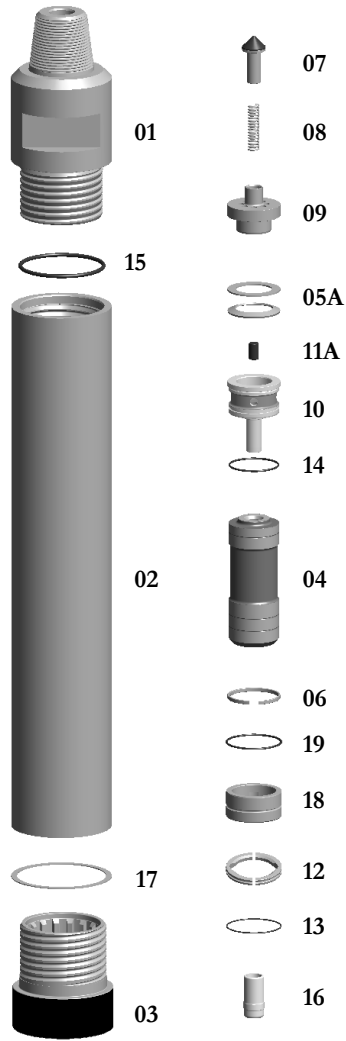
**BB8-Deep Hole-Hammer**

**\*\*FOR OIL FIELD\*\***

**TAKES QL8 SHANKS**

Thread Change/Pin  
Box Thread  
Carbide Buttons  
Side Carbide Buttons  
Special Flats

\*\*SPECIAL TOP SUB FEATURES—CALL OFFICE



Replacement Parts			
Hmr Part #	Description	Order #	Weight (lbs.)
BB8-01	Top Sub 4-1/2" API REG PIN w/O-Ring	<b>EBB8-01</b>	93.00
BB8-15	**Replacement O-Ring for Top Sub**	<b>E8-15</b>	0.1
BB8-02	Piston Case w/Retainer Ring	<b>EBB8-02</b>	157.0
BB8-06	**Replacement Retainer Ring for Piston Case**	<b>EBB8-06</b>	0.4
BB8-03	Chuck - FOR OIL	<b>EBB8-03A</b>	24.0
BB8-04	Piston	<b>EBB8-04</b>	70.0
BB8-05A	Disc Spring / Spacer Ring Set	<b>E8-05A</b>	1.5
BB8-07	Check Valve Dart	<b>E8-07</b>	1.5
BB8-08	Check Valve Dart Spring	<b>E8-08</b>	0.3
BB8-09	Check Valve Guide	<b>E8-09</b>	12.0
BB8-10	Rigid Valve w/ O-ring OIL FIELD	<b>E8-10</b>	15.0
BB8-14	**Replacement O-Ring for Rigid Valve**	<b>E8-14</b>	0.1
BB8-11(5)	Choke Set	<b>E8-11(5)</b>	1.5
BB8-11A	Blank Choke	<b>E8-11A</b>	0.3
BB8-11B	1/8" Choke	<b>E8-11B</b>	0.3
BB8-11C	1/4" Choke	<b>E8-11C</b>	0.3
BB8-11D	3/8" Choke	<b>E8-11D</b>	0.3
BB8-11E	7/16" Choke	<b>E8-11E</b>	0.3
BB8-12	Bit Retainer Ring w/O-Ring	<b>EBB8-12</b>	2.0
BB8-13	**Replacement O-Ring for Bit Retainer Ring**	<b>ET8-13</b>	0.2
BB8-16	Foot Valve	<b>EQL80-24</b>	0.2
BB8-17A	Brass Break Out Ring - Bottom (Optional)	<b>ET8-17</b>	0.2
BB8-17	Brass Break Out Ring - Top (Optional)	<b>E8-17</b>	0.2
BB8-18	Bearing w/O-Ring OIL FIELD	<b>EBB8-18A</b>	8.0
BB8-19	**Replacement O-Ring for Bearing**	<b>E8-14</b>	0.1

	Outside Diameter		Hammer Length Pin		Hammer Length Box		Bit Size Range	
	IN.	MM.	IN.	MM.	IN.	MM.	IN.	MM.
BB8 Deep Hole	7-1/8	180.34	48-1/16	1120.8	51-3/4	1314.45	7-7/8-12	200-305