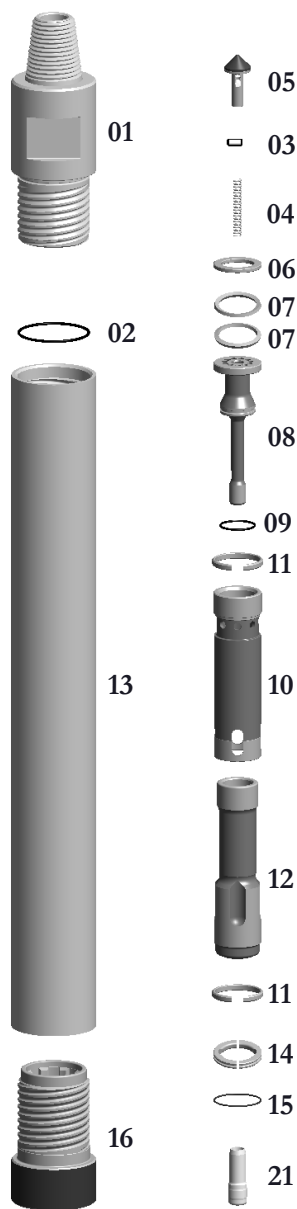


**T4-STD-Hammer**

**TAKES 340 SHANKS**

Thread Change/Pin  
Box Thread  
Carbide Buttons  
Special Flats

\*\*SPECIAL BACKHEAD FEATURES—CALL OFFICE



**Replacement Parts**

Hmr Part #	Description	Order #	Weight (lbs.)
T4-01	Backhead 2-7/8" API REG PIN w/O-Ring	<b>ET4-01</b>	19.0
T4-01	Backhead 2-3/8" API REG PIN w/O-Ring	<b>ET4-01A</b>	19.0
T4-02	**Replacement O-Ring for Backhead**	<b>EBB5-09</b>	0.1
T4-03(S)	Choke Set	<b>ET4-03S</b>	0.3
T4-03	Blank Choke	<b>ET4-03</b>	0.1
T4-03A	1/8" Choke	<b>ET4-03A</b>	0.1
T4-03B	3/16" Choke	<b>ET4-03B</b>	0.1
T4-04	Check Valve Dart Spring	<b>E5-08</b>	0.3
T4-05	Check Valve Dart	<b>ET4-05</b>	1.5
T4-06	Spacer	<b>ET4-06</b>	0.4
T4-07	Disc Spring (requires 2)	<b>ET4-07</b>	0.3/ea
T4-08	Air Distributor w/O-Ring	<b>ET4-08</b>	4.0
T4-09	**Replacement O-Ring for Air Distributor**	<b>ET4-09</b>	0.1
T4-10	Cylinder w/Retainer Ring	<b>ET4-10</b>	6.0
T4-11	**Replacement Retainer Ring for Cylinder**	<b>ET4-11</b>	0.2
T4-12	Piston	<b>ET4-12</b>	15.0
T4-13	Wear Sleeve w/Retainer Ring	<b>ET4-13</b>	33.0
T4-11	**Replacement Retainer Ring for Wear Sleeve**	<b>ET4-11</b>	0.2
T4-14	Bit Retainer Ring w/O-Ring	<b>ET4-14</b>	0.4
T4-15	**Replacement O-Ring for Bit Retainer Ring**	<b>ET4-15</b>	0.1
T4-16	Chuck	<b>ET4-16</b>	8.0
T4-16-DM	Chuck - Ductile	<b>ET4-16-DM</b>	8.0
T4-17	Wear Washer (If Needed)	<b>ET4-17</b>	0.1
T4-21	Foot Valve	<b>E340A-25</b>	0.5

	Outside Diameter		Hammer Length Pin		Hammer Length Box		Bit Size Range		
	IN.	MM.	IN.	MM.	IN.	MM.	IN.	MM.	
T4	3-7/8	98.43	36-5/8	930.28	40-7/8	1038.23	4-1/4-5-1/4	108-134	
<b>Choke Size</b>	<b>200 PSI</b>	<b>13.8 BARS</b>	<b>250 PSI</b>	<b>17.2 BARS</b>	<b>300 PSI</b>	<b>20.7 BARS</b>	<b>350 PSI</b>	<b>24.1 BARS</b>	
Blank	Blank	500	14.16	660	18.69	800	22.65	925	26.19
1/8	3.18	527	14.92	700	19.82	848	24.01	975	27.60
3/16	4.76	555	15.71	748	21.18	906	25.65	1047	29.64

The above air charts are based upon ideal conditions, your results may vary.