

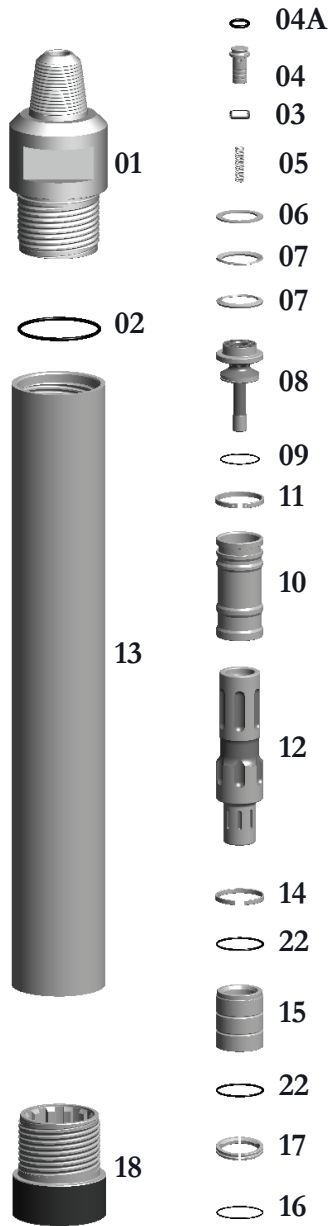


P6-STD Hammer	w/3-1/2" API Reg Pin	Wt. 206 lbs.
P6-HD Hammer	w/3-1/2" API Reg Pin	Wt. 234 lbs.

TAKES QL6 SHANKS—NO FOOT VALVE

**SPECIAL BACKHEAD FEATURES—CALL OFFICE

Thread Change/Pin
Box Thread
Carbide Buttons
Special Flats



Replacement Parts

Hmr Part #	Description	Order #	Weight (lbs.)
P6-01	Backhead 3-1/2"API REG PIN w/O-Ring	EBB6-01	45.0
P6-01HD	Backhead HD 3-1/2"API REG PIN w/O-Ring	EBB6-01HD	47.0
P6-02	**Replacement O-Ring for Backhead**	E6-16	0.1
P6-03 (S)	Choke Set	EBB6-03(S)	0.3
P6-03	Choke - Blank	EBB6-03	0.1
P6-03A	1/8" Choke	EBB6-03A	0.1
P6-03B	3/16" Choke	EBB6-03B	0.1
P6-04	Check Valve Dart w/O-Ring	EBB6-04	1.1
P6-04A	**Replacement O'Ring for Check Valve Dart**	EBB6-04A	0.1
P6-05	Check Valve Dart Spring	EP6-05	0.4
P6-06	Spacer	EBB6-06	0.2
P6-07	Disc Spring (Requires 2)	EBB6-07	0.3/ea
P6-08	Air Distributor w/O-Ring	EBB6-08	9.0
P6-09	**Replacement O-Ring for Air Distributor**	EBB6-09	0.1
P6-10	Cylinder w/Retainer Ring	EBB6-10	8.0
P6-11	**Replacement Retainer Ring for Cylinder **	EBB6-11	0.5
P6-12	Piston	EP6-12	48.0
P6-13	Wear Sleeve w/Retainer Ring	EP6-13	72.0
P6-13HD	Wear Sleeve w/Retainer Ring HEAVY DUTY	EP6-13HD	96.0
P6-14	**Replacement Retainer Ring for Wear Sleeve**	EBB6-14	0.2
P6-15	Bearing w/O-Ring	P6-15	10.0
P6-22	**Replacement O-Ring for Bearing** (Uses two)	E6-14	0.2
P6-17	Bit Retainer Ring w/O-Ring	EBB6-17	0.5
P6-16	**Replacement O-Ring for Bit Retainer**	EBB6-09	0.1
P6-18	Chuck	EBB6-18	12.0
P6-18-DM	Chuck - Ductile	EBB6-18-STD-DM	12.0
P6-18HD	Chuck HEAVY DUTY	EBB6-18HD	14.0
P6-18HD-DM	Chuck - Ductile - HEAVY DUTY	EBB6-18HD-DM	14.0
P6-20	Wear Washer (If needed)	EBB6-20	0.2
P6-21	Break Out Ring (Optional)	EBB6-21	0.5

	Outside Diameter		Hammer Length Pin		Hammer Length Box		Bit Size Range		
	IN.	MM.	IN.	MM.	IN.	MM.	IN.	MM.	
P6	5-1/2	139.7	43-1/2	1105	47-3/8	1200	6-10	153-254	
P6 HD	5 3/4	146.0	43-1/2	1105	47-3/8	1200	6-1/2-10	165-254	
Choke Size	200 PSI	13.8 BARS	250 PSI	17.2 BARS	300 PSI	20.7 BARS	350 PSI	24.1 BARS	
IN.	MM.								
Blank	Blank	542	15.35	760	21.52	840	23.78	950	26.90
1/8	3.18	569	16.11	800	22.65	888	25.14	1000	28.31
3/16	4.76	597	16.90	848	24.01	946	26.78	1072	30.35

The above air charts are based upon ideal conditions, your results may vary.