

P8

w/4-1/2"API Reg Pin

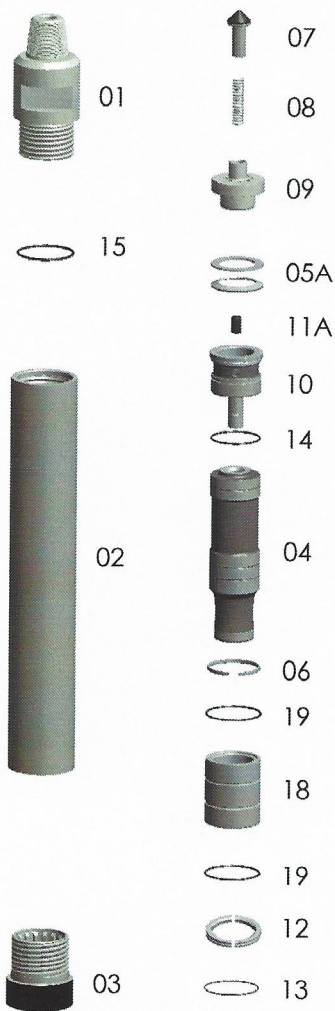
Wt. 436 lbs.

EP8-STD-Hammer

TAKES QL80 SHANKS—NO FOOT VALVE

**SPECIAL BACKHEAD FEATURES—CALL OFFICE

Thread Change/Pin
Box Thread
Carbide Buttons
Side Carbide Buttons
Special Flats



Replacement Parts			
Hmr Part #	Description	Order #	Weight (lbs.)
P8-01	Top Sub 4-1/2" API REG PIN w/O-Ring	EBB8-01	93.0
P8-15	**Replacement O-Ring for Top Sub**	E8-15	0.1
P8-02	Piston Case w/ Retainer Ring	EP8-02	173.0
P8-06	**Replacement Retainer Ring for Piston Case**	EBB8-06	0.4
P8-03	Chuck	EBB8-03	24.0
P8-04	Piston	EP8-04	86.0
P8-05A	Disc Spring & Spacer Set	E8-05A	1.5
P8-07	Check Valve Dart	E8-07	1.5
P8-08	Check Valve Dart Spring	E8-08	0.3
P8-09	Check Valve Guide	E8-09	12.0
P8-10M	Rigid Valve w/O-Ring – Modified	E8-10M	15.0
P8-14	**Replacement O-Ring for Rigid Valve**	E8-14	0.1
P8-11	Choke Set	E8-11(5)	1.5
P8-11A	Blank Choke	E8-11A	0.3
P8-11B	1/8" Choke	E8-11B	0.3
P8-11C	1/" Choke	E8-11C	0.3
P8-11D	3/8" Choke	E8-11D	0.3
P8-11E	7/16" Choke	E8-11E	0.3
P8-12	Bit Retainer Ring w/O-Ring	EBB8-12	2.0
P8-13	**Replacement O-Ring for Bit Retainer**	ET8-13	0.2
P8-18	Bearing W/ (2) O-rings	P8-18	21.0
P8-19	**Replacement O-Ring for Bearing**	E8-14	0.1

		Outside Diameter		Hammer Length Pin			Bit Size Range		
		IN.	MM.	IN.	MM.	IN.	MM.		
P8		7-1/8	180.975	52-1/2	1333.5	7-7/8-12	200.025-304.8		
Choke Size		200 PSI	13.8 BARS	250 PSI	17.2 BARS	300 PSI	20.7 BARS	350 PSI	24.1 BARS
IN.	MM.								
Blank	Blank	693	19.62	866	24.52	1040	29.45	1200	33.98
1/8	3.18	766	21.69	971	27.50	1080	30.58	1240	35.11
1/4	6.35	806	22.82	1022	28.94	1175	33.27	1315	37.24
3/8	9.53	1062	30.07	1145	32.42	1368	38.74	1547	43.81
None	None	1148	32.51	1385	39.22	1654	46.84	1891	53.55

The above air charts are based upon ideal conditions, your results may vary.
CFM = Cubic feet per minute • PSI = Pounds per square inch