



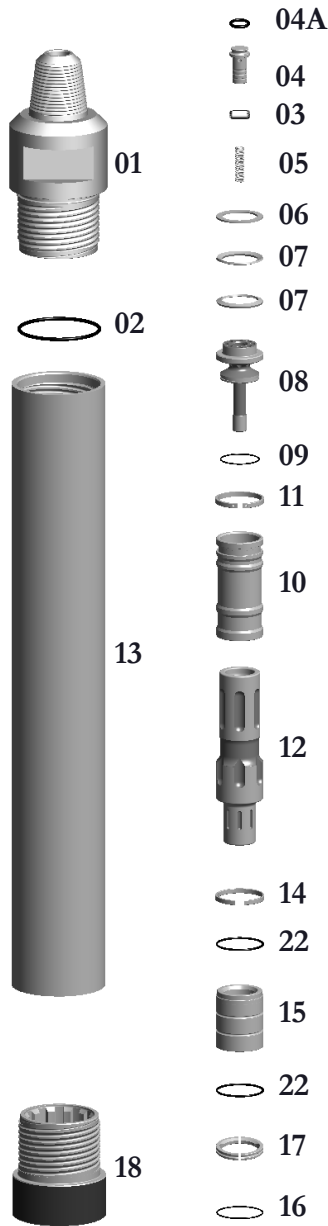
**P6-STD Hammer**      w/3-1/2" API Reg Pin      Wt. 206 lbs.

**P6-HD Hammer**      w/3-1/2" API Reg Pin      Wt. 234 lbs.

**TAKES QL6 SHANKS—NO FOOT VALVE**

Thread Change/Pin  
Box Thread  
Carbide Buttons  
Special Flats

\*\*SPECIAL BACKHEAD FEATURES—CALL OFFICE



**Replacement Parts**

Hmr Part #	Description	Order #	Weight (lbs.)
P6-01	Backhead 3-1/2"API REG PIN w/O-Ring	<b>EBB6-01</b>	45.0
P6-01HD	Backhead HD 3-1/2"API REG PIN w/O-Ring	<b>EBB6-01HD</b>	47.0
P6-02	**Replacement O-Ring for Backhead**	<b>E6-16</b>	0.1
P6-03 (S)	Choke Set	<b>EBB6-03S</b>	0.3
P6-03	Choke - Blank	<b>EBB6-03</b>	0.1
P6-03A	1/8" Choke	<b>EBB6-03A</b>	0.1
P6-03B	3/16" Choke	<b>EBB6-03B</b>	0.1
P6-04	Check Valve Dart w/O-Ring	<b>EBB6-04</b>	1.1
P6-04A	**Replacement O'Ring for Check Valve Dart**	<b>EBB6-04A</b>	0.1
P6-05	Check Valve Dart Spring	<b>EP6-05</b>	0.4
P6-06	Spacer	<b>EBB6-06</b>	0.2
P6-07	Disc Spring (Requires 2)	<b>EBB6-07</b>	0.3/ea
P6-08	Air Distributor w/O-Ring	<b>EBB6-08</b>	9.0
P6-09	**Replacement O-Ring for Air Distributor**	<b>EBB6-09</b>	0.1
P6-10	Cylinder w/Retainer Ring	<b>EBB6-10</b>	8.0
P6-11	**Replacement Retainer Ring for Cylinder **	<b>EBB6-11</b>	0.5
P6-12	Piston	<b>EP6-12</b>	48.0
P6-13	Wear Sleeve w/Retainer Ring	<b>EP6-13</b>	72.0
P6-13HD	Wear Sleeve w/Retainer Ring HEAVY DUTY	<b>EP6-13HD</b>	96.0
P6-14	**Replacement Retainer Ring for Wear Sleeve**	<b>EBB6-14</b>	0.2
P6-15	Bearing w/O-Ring	<b>P6-15</b>	10.0
P6-22	**Replacement O-Ring for Bearing** (Uses two)	<b>E6-14</b>	0.2
P6-17	Bit Retainer Ring w/O-Ring	<b>EBB6-17</b>	0.5
P6-16	**Replacement O-Ring for Bit Retainer**	<b>EBB6-09</b>	0.1
P6-18	Chuck	<b>EBB6-18</b>	12.0
P6-18-DM	Chuck - Ductile	<b>EBB6-18-STD-DM</b>	12.0
P6-18HD	Chuck HEAVY DUTY	<b>EBB6-18HD</b>	14.0
P6-18HD-DM	Chuck - Ductile - HEAVY DUTY	<b>EBB6-18HD-DM</b>	14.0
P6-20	Wear Washer (If needed)	<b>EBB6-20</b>	0.2
P6-21	Break Out Ring (Optional)	<b>EBB6-21</b>	0.5

	Outside Diameter		Hammer Length Pin		Hammer Length Box		Bit Size Range		
	IN.	MM.	IN.	MM.	IN.	MM.	IN.	MM.	
P6	5-1/2	139.7	43-1/2	1105	47-3/8	1200	6-10	153-254	
P6 HD	5 3/4	146.0	43-1/2	1105	47-3/8	1200	6-1/2-10	165-254	
Choke Size	200 PSI	13.8 BARS	250 PSI	17.2 BARS	300 PSI	20.7 BARS	350 PSI	24.1 BARS	
IN.	MM.								
Blank	Blank	542	15.35	760	21.52	840	23.78	950	26.90
1/8	3.18	569	16.11	800	22.65	888	25.14	1000	28.31
3/16	4.76	597	16.90	848	24.01	946	26.78	1072	30.35

The above air charts are based upon ideal conditions, your results may vary.