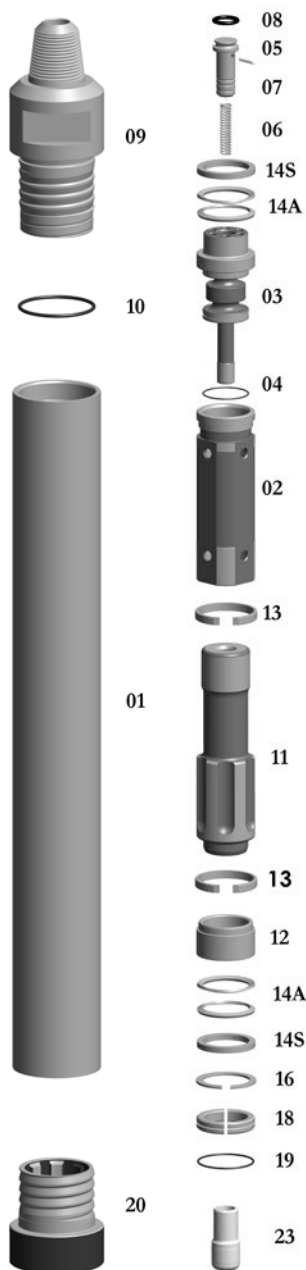


**ECF6A-STD-HMR-BK
ECF6-LV-STD-HAMMER
TAKES 360 SHANKS**

**SPECIAL BACKHEAD FEATURES – CALL OFFICE



Replacement Parts			
Hmr Part #	Description	Order #	Weight (lbs.)
CF6-01	Wear Sleeve w/Piston Retainer Ring	ECF6-01	90.0
CF6-13	**Replacement Piston Retainer Ring for Wear Sleeve**	ECF6-13	0.5
CF6-02	Cylinder	ECF6-02	15.0
CF6-03	Air Distributor w/O-Ring	ECF6-03	17.0
CF6-04	**Replacement O-Ring for Air Distributor	ECF6-04	0.1
CF6-05(S)	Plug (3 pcs) Set	ECF6-05(S)	0.3
CF6-05	Blank Plug	ECF6-05	0.1
CF6-05A	1/8" Plug	ECF6-05A	0.1
CF6-05B	3/16" Plug	ECF6-05B	0.1
CF6-06	Check Valve Spring	ECF6-06	0.4
CF6-07	Check Valve	ECF6-07	0.4
CF6-08	**Replacement O-Ring for Check Valve	EBB6-08	0.1
CF6-09	Backhead 3-1/2"API REG PIN w/O-Ring	ECF6-09	47.0
CF6-10	**Replacement O-Ring for Backhead**	ECF6-10	0.1
CF6-11	Piston	ECF6-11DF	53.0
CF6-11	Piston - Low Volume (Not Shown)	ECF6-11LV	53.0
CF6-12	Bearing	ECF6-12LV	5.0
CF6-14A	Disc Spring - New Style (Uses two)	ECF6-14A	0.4 ea.
CF6-14S	Disc Spring - Spacer	ECF6-14S	0.8
CF6-16	Retainer Snap Ring	ECF6-16	0.3
CF6-18	Bit Retainer Ring w/ O-Ring	ECF6-18	1.5
CF6-19	**Replacement O-Ring for Bit Retainer**	ECF6-19	0.1
CF6-20	Chuck	ECF6-20	13.0
CF6-21	Wear Spacer	ECF6-21	0.2
CF6-23FV	Foot Valve	ECF6-23FV	0.2
CF6-24	Brass Break-Out Ring	ECF6-24	0.1

	Outside Diameter		Hammer Length Pin		Hammer Length Box		Bit Size Range	
	IN.	MM.	IN.	MM.	IN.	MM.	IN.	MM.
CF6A	5-3/8	136.5	49-5/16	1254.8	53-1/16	1350.2	6 – 10	153 – 254
CF6ALV	5-3/8	136.5	49-5/16	1254.8	53-1/16	1350.2	6 – 10	153 – 254